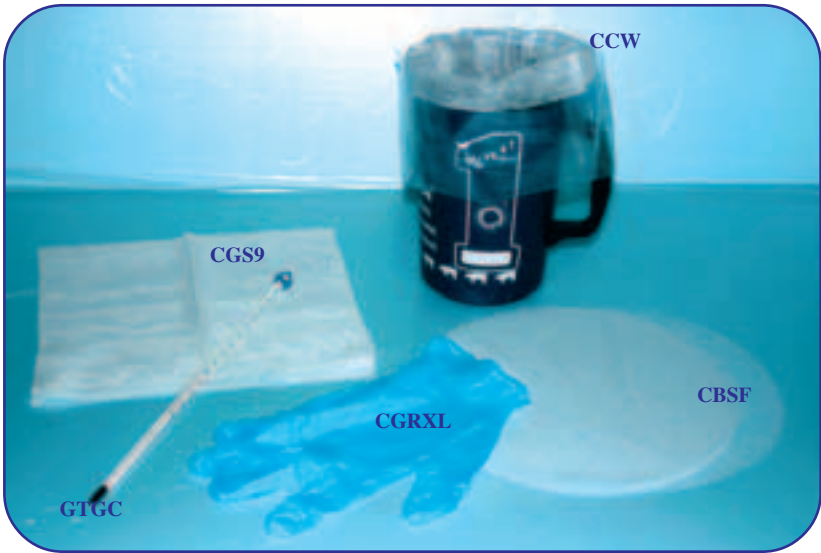




SWINE GENETICS
INTERNATIONAL
LTD

Equipment Catalog

COLLECTION



- CK Collection Kit, Includes: collection cup, 20 CBL collection bags, 20 gauze squares, 20 collection gloves, 2000 ML plastic flask, 1000 ML plastic beaker, 600 ML plastic beaker, 30 bottles & caps, 20 spirettes, 1 glass thermometer, and 1 small (TK4) styrofoam container
- CCW Collection cup with handle
- CMBW Collection bag with gauze and perforation
- CMBWS Collection bag with gauze and perforation, with built in dispensing spout
- CBL Plastic bags, large, 12" x 18"
- CBS Plastic bags, small, 8" x 10"
- CGS9 Gauze squares, 9" X 9"
- CGSC Gauze Squares, precut bolt, approx 275 9" x 9" squares /bolt
- CGU Gauze, uncut bolt, 70 yards/bolt
- CBSF Round Boar semen filter, 200/package
- CGRXL Collection gloves, x-large, royal textured, non-latex, 100/box
- CGRL Collection gloves, large, royal textured, non-latex, 100/box
- CGRM Collection gloves, medium, royal textured, non-latex, 100/box
- CGRS Collection gloves, small, royal textured non-latex, 100/box
- CGXL Collection gloves, x-large, non-latex, 100/box
- CGL Collection gloves, large, non-latex, 100/box
- CGM Collection gloves, medium, non-latex, 100/box
- CGS Collection gloves, small, non-latex, 100/box

COLLECTION



- CDP Collection Dummy, Portable, adjustable height
CRM Rubber mat for collection, with holes, 48" x 72" x 75"

GENERAL

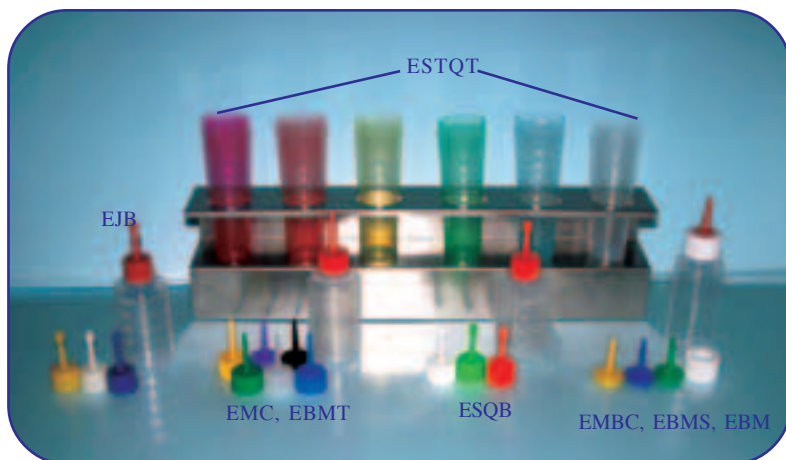
- GPG PG 600, 1 individual dose vial
GPG1 PG 600, 1 dose vials (5/pkg)
GPG5 PG 600, 5 dose vial
GTUBE Tubing, plastic, disposable, per foot
GBOOT Boots, plastic knot-a-boot, disposable, 25 pair/box
GDET Lab detergent, 1 liter
GSTS Styrofoam box, small, TK4 (inside 7 7/8 x 6 x 4 1/2)
GSTSL Styrofoam box, SL10 (TK4 fits inside)
GSTM Styrofoam box, medium, TK8 (inside 11 1/2 x 9 x 9 1/2)
GSTPC Styrofoam box, PC30 (TK8 fits inside)
GSTL Styrofoam box, large, SL10 (inside 10 3/4 x 10 1/2 x 8)
GSTSL Styrofoam box, SL22 (SL10 fits inside)
GCOV Coveralls, disposable, large
GCOV2X Coveralls, disposable, 2xlarge
GTGC Thermometer, glass, -20 to 110⁰ Centigrade
GTGF Thermometer, glass, 0 to 230⁰ Fahrenheit
GTMC Thermometer, metal, -10 to 110⁰ Centigrade
GTMF Thermometer, metal, -40 to 160⁰ Fahrenheit
GP Polar Packs
GPCS Polar Packs, 36/case
GCG Compress gas
GKW Kimwipes, 250/box (4 1/2 x 8 1/2)
GTP5 Transfer Pipettes, 5"/ 7.7 ml. 500/box
GPAR Parafilm 4: x 250'

EXTENDERS



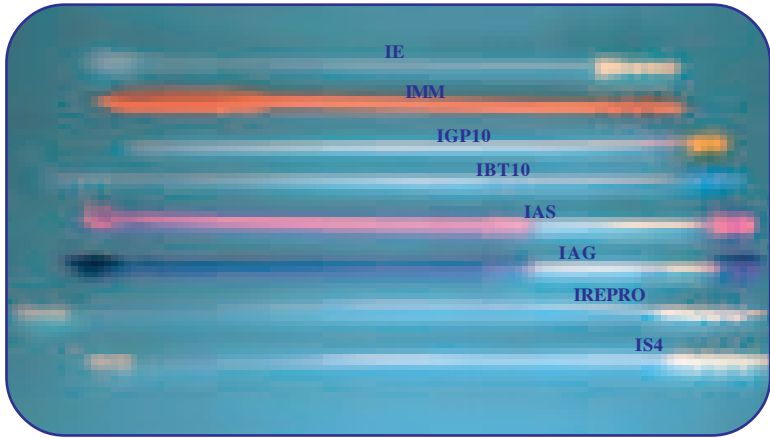
- EM1 Extender, Modena, 1 liter, contains antibiotics
- EM3 Extender, Modena, 3 liter package, contains antibiotics
- EM10 Extender, Modena, 10 liter package, contains antibiotics
- EM4.8 Extender, Modena, 4.8 kg, contains antibiotics
(makes 100 liters)
- EEV1 Extender, Everhold, 1 liter package, contains antibiotics
- EEV10 Extender, Everhold, 10 liter package, contains antibiotics
- EEV4.8 Extender, Everhold, 4.85 kg, contains antibiotics
(makes 100 liters)
- EBTS1 Extender, BTS, 1 liter, contains antibiotics
- EBTS5A Extender, BTS, 5 kg
(makes 100 liters)
- EAND1 Extender, Androhep Lite, 1 liter package
- EAND5 Extender, Androhep Lite, 5 kg
(makes 100 liters)
- EAND+ Extender, Androhep Plus, 5 kg
(makes 100 liters)
- EEN1 Extender, EnduraGuard, 1 liter package
- EEN4.7 Extender, EnduraGuard, 4.7 KG
(makes 100 liters)

EXTENSION



- EJB Joong Ang Bottle, includes twist-tip caps, graduated 100 ml
- EJBCA Joong Ang bottles, 500/case includes caps
- EJBCAP Joong Ang bottle cap, twist tip, Specify: blue, white, red, yellow
- EBMT Minitube bottle without caps, 100 ml
- EMC Minitube bottle cap, Specify: clear, blue, green, red, yellow, black, purple
- EBM Big Mouth bottle, wide mouth, graduated 100 ml, without collar or spout
- EBMC Big Mouth bottle collar
- EBMS Big Mouth bottle spout
- ESQB Square bottle, includes twist-tip caps, graduated 100 ml Specify: white, orange, green, red
- EDB Dispensing bag
- EDS Dispensing spout for use with EDB dispensing bag
- EST Semen tubes, 95 ml, 2000/case, continental
- ESTQT Quicktip semen tubes, 2000/case, Minitube Specify: clear, blue, red, yellow, green, blue
- ESTHVV Heavy quicktip semen tubes, 2000/case, Minitube

INSEMINATION



IS4	Disposable 19" spirettes, 4/package
ISCS	Disposable 19" spirettes, 500/case, 125 packages of 4
ISCS1M	Disposable 19" spirettes, 500/case, 5 packages of 100
IAG	Absolute-Gilt insemination rod, purple foam tip
IAS	Absolute-Sow insemination rod, pink foam tip
IBT10	Blue Tip catheter, disposable, 10/package
IBT25	Blue Tip catheter, disposable, 25/package
IBTCS	Blue Tip catheter, disposable, 500/case
IREPRO	Disposable 22" spirettes, 5/package
IREPCS	Disposable 22" spirettes, 500/case, 100 packages of 5
IGP10	Golden Pig insemination rod, disposable, sponge tip, 10/package
IGP25	Golden Pig insemination rod, disposable, sponge tip, 25/package
IGPCS	Golden Pig insemination rod, disposable, sponge tip, 500/case
IMS	Melrose, Spanish, nondisposable, spiral tip rubber catheter
IMJ	Melrose, Joong Ang, nondisposable, spiral tip rubber catheter
IMM	Melrose, Minitube, nondisposable, spiral tip rubber catheter
IE	Easi Mate catheter, disposable, spiral sponge tip
IBMATE	Boar Mate spray
IBMCS	Boar Mate spray, 12/case
ILUBE	Lube, non-spermicidal sterile lubricating jelly, 5 oz tube

LABWARE



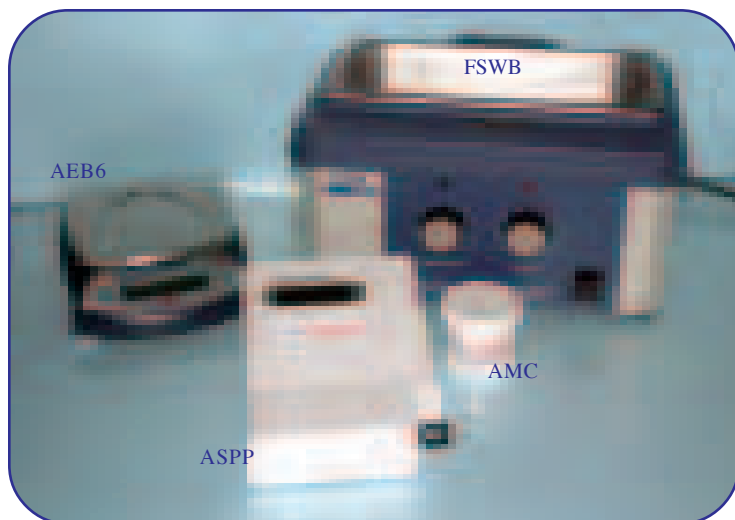
GLASS

- LGB600 Beaker, 600 ml graduated
LGB1 Beaker, 1000 ml, graduated
LGB2 Beaker, 2000 ml, graduated
LGF1 Flask, 1000 ml, graduated
LGF2 Flask, 2000 ml, graduated
LGBT1 Bottle, 1000 ml graduated with cap

PLASTIC

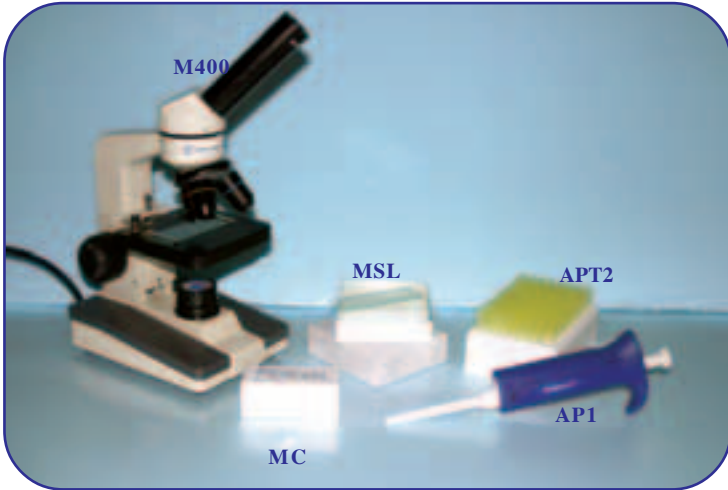
- LPB6 Beaker, 600 ml, graduated
LPB1 Beaker, 1000 ml, graduated
LPP2 Pitcher, 2000 ml, graduated with handle
LPF1 Flask, 1000 ml, graduated
LPF2 Flask, 2000 ml, graduated
LPRBT5 Rectangular bottle, 500 ml, polyethylene
LPBT Round Bottle, wide mouth, 1000 ml with cap
LPJ4 Polyethylene Jug, 4 liter with cap
LPJ8 Polyethylene Jug, 8 liter with cap
LPWBT Wash bottle with spray nozzle, 500 ml
LFunnl Funnel

LAB EQUIPMENT AND ACCESSORIES



AEB6	Electronic Balance, 4000g Scout Pro
ACUV	Cuvettes, square, 100/tray, for use with spectronic photometer
ASPP	Spermacue Photometer
AMC	Microcuvettes, for use with Spermacue, 100/package
AP1	Pipette, 100-1000 ul, adjustable volume
APT1	Pipette tips 100-1000 ul, blue, 500/package
APT2	Pipette Tips, 1-200 ul, yellow, 480/package
ATTP	Test Tubes, plastic with caps 1000/package
ATTG	Test Tubes, glass, disposable, 250/package
ATTR	Test Tube rack
ASC	Sodium choride to make 500 ml of saline
FSWB	Straw thawing water bath
AWBH	Water bath heater circulator
AMS2	Melrose sterilizer, 20 melrose, stainless steel
AB2	Boiler unit for 20 Melrose sterilizer
AMP	Mixing and dispensing pitcher
AAS	Auto-Sealer for boar semen tubes, 3 tube sealer, model 3000
AAS6	Auto-Sealer for boar semen tubes, 6 tube sealer, model 7000
ADC	Distiller, countertop, distillate capacity 3 gallons/day
AOVEN	Oven, Equatherm economy, 3.1 Cu Ft
ASW	Slide warmer

MICROSCOPE & ACCESSORIES



M400	Microscope, 400 power without slides or cover glass
MSL	Slides, plain glass, 72 slides/box
APT2	Pipette tips, 1-200 ul, yellow 480/pkg
AP1	Pipette tips, 100-1000 ul, blue, 500/pkg
MC	Cover glass, 1 oz box, approx 225 covers/oz
MCSL	Caffeine slides, 72 slides/box
MB	Microscope replacement bulbs (need model number)

STORAGE



SRPS	Semen Storage unit, 60-100 doses, LCD temperature display, 14"Wx20"Lx20"H
SDSU	Danby Storage Unit, heat & cool, preset



FROZEN SEMEN NITROGEN TANKS



FNT Nitrogen Tank, SC20/20, MVE



FNT33 Nitrogen Tank, XC33/22, MVE



FNT47 Nitrogen Tank, XC47/11-10, MVE



FNT34 Nitrogen Tank, XC34/48, MVE

ULTRASONIC EQUIPMENT

RPAURO



RPTII+



RPTC



RLM



- RPTC Renco Preg-Tone, cable transducer, measures pig & sheep pregnancy
- RPTII+ Renco Preg-Tone II Plus, built-in transducer measures pig & sheep pregnancy
- RPTIIW Renco Preg-Tone II Plus, with earphone measures pig & sheep pregnancy (built-in transducer)
- RLM Renco Lean-Meater, cable transducer, digital fat thickness measurement in pigs
- RPAU Renco Preg-Alert Ultra Pro, measures pig, sheep, cattle pregnancy, backfat & loin muscle thickness

CUSTOMER SERVICE

Most products listed in this catalog are the same used daily by SGI for over 25 years to process our high quality frozen and liquid semen known throughout the world. Also, products have been proven by long time customers that may not do things quite on the scale as SGI. Many unlisted equipment or supply items can be found by calling our experienced staff. SGI has a staff with a vast knowledge of the swine AI industry and as an SGI customer you have the right to access this knowledge.

To place an order call 800-247-3958 / 515-383-4386

Email: swinegenetics@worldnet.att.net

www.swinegenetics.com



Swine Genetics International, Ltd.



**30805 595th Avenue
Cambridge, Iowa 50046**

Toll Free: 800-247-3958

Ph: (515) 383-4386 Fax: (515) 383-2257

Email: swinegenetics@worldnet.att.net